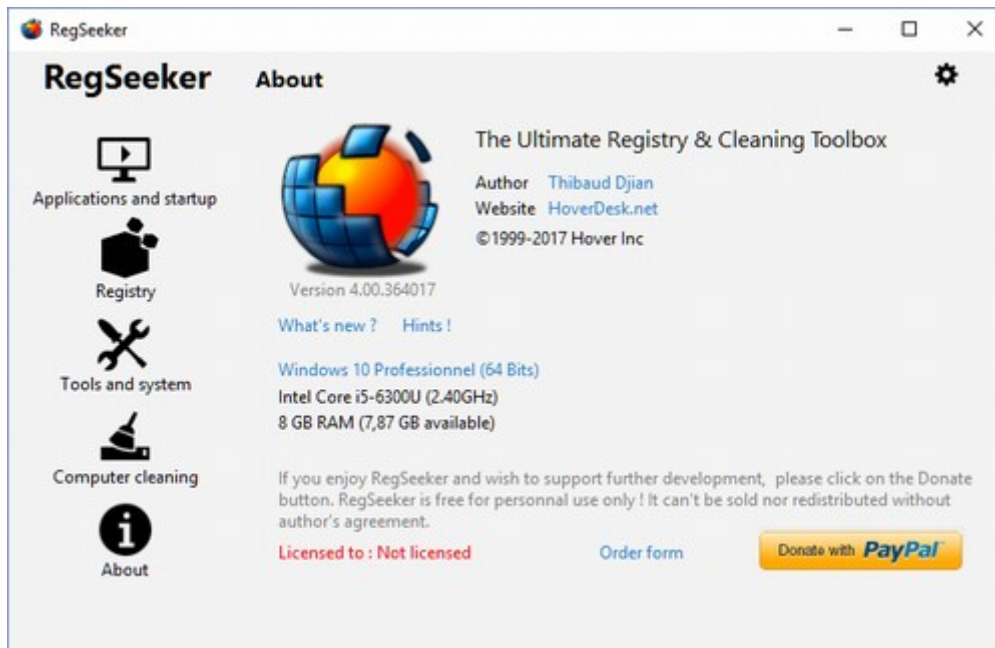


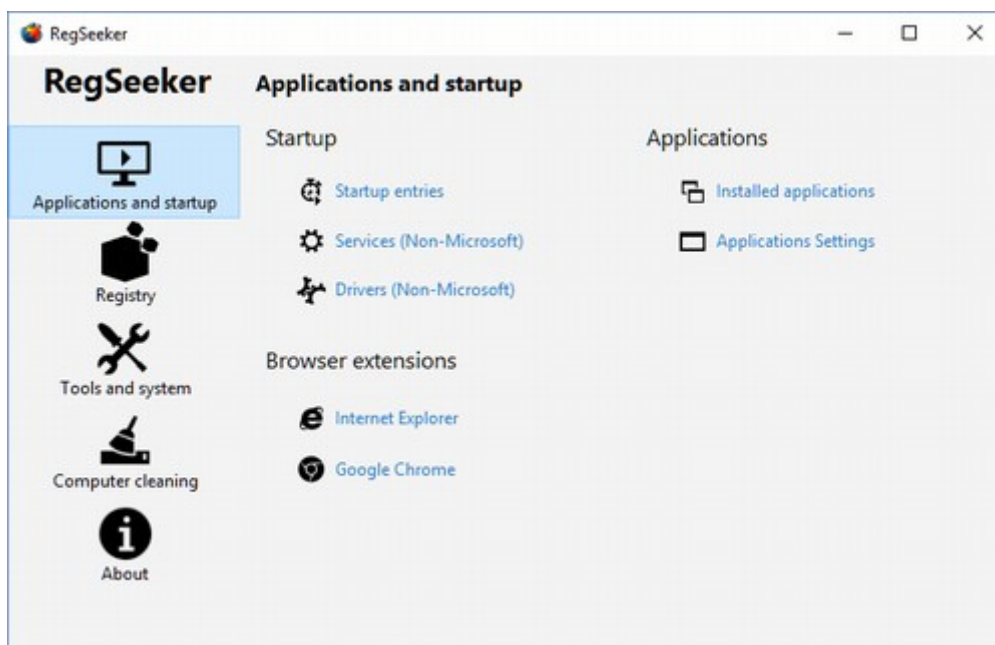
RegSeeker – Quick reference guide


Changing the language interface

Language selection: click on the  icon




Applications and startup





 **Startup entries** all programs which are run on Windows startup


- You can enable or disable (goes to **grey**) any entry via the right-click
- Double-click on an item will bring you to the registry entry
- Right-click and choose "open parent directory" will open an explorer window where the executable is located
- Export selected item will create a registry backup (backups are available via the Registry panel / Backups)


 **Services** list all non-Microsoft services which are installed on your PC with their status and startup.


- **Green flag**: process is running, **Red flag**: process is stopped. You can start/stop them and change their startup mode via the right-click menu.


 **Drivers** list all non-Microsoft drivers which are installed on your PC with their status and startup mode. You can manually start and stop a driver.


 If you want to display all Services or Drivers including Microsoft ones, just hit the **SHIFT** key before clicking on Services / Drivers

 Invalid services/drivers due to a missing file (invalid path) will be displayed in **Red**. You can manually fix the invalid path opening the registry (double-click on the item) or choose to delete the invalid service/driver. A backup will be done before operation.

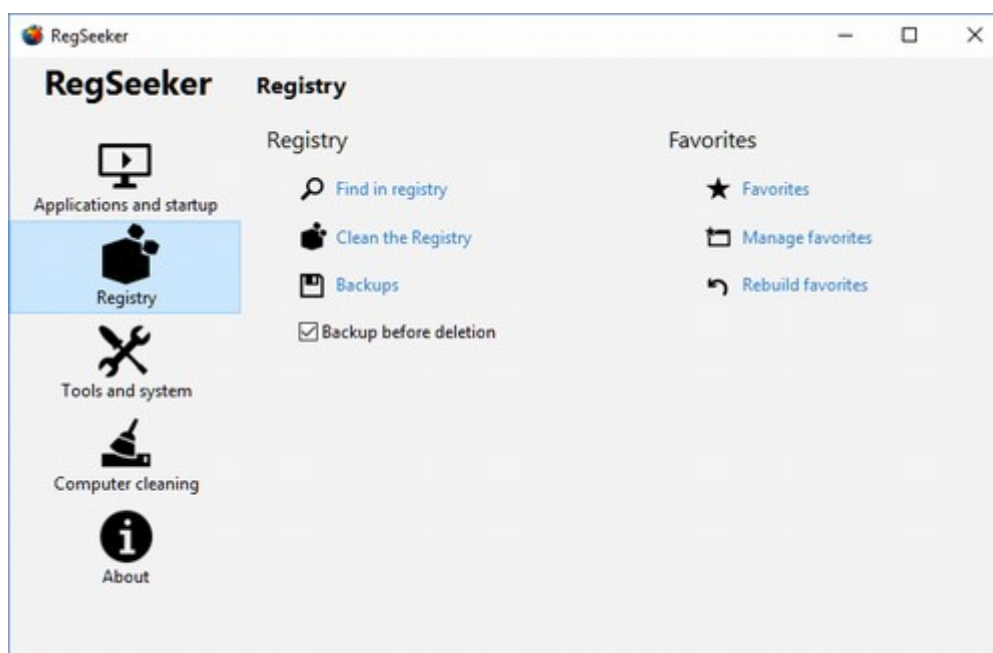
 **Installed applications** list all applications which have been installed on your computer and their size estimation. Right-click on an application entry to uninstall/rename/delete or export the registry entry. You can sort the results by installation date, size, name... and export the full list content.


 **Application settings** Applications are usually creating registry entries in order to save their settings, recent documents etc... Right-click to export / delete those entries. Double-click to open the matching registry entry.

 **Internet Explorer** will display all IE add-ons like Browser Helper Objects, ActiveX, Toolbars and Extensions. You can delete the unwanted ones. A backup will be performed.


 **Chrome Extensions** will display all extensions installed on your Google Chrome browser. You can only delete them. If you delete an extension by mistake, just open your Windows Recycle Bin and choose Restore.


Registry




 **Find in registry** you can search for any items into your Windows registry

- Group similar keys: won't display results where entries are similar
- Match whole word only: will display only results with the exact search item
- Search protected keys: will only display registry keys which are protected. No need to enter a search text


 If for some reason you cannot delete a key which is protected on the search results, you can try taking ownership of the key hitting the **SHIFT** key and right-click on the entry to select "**Take Ownership !**". If taking ownership is successful, you can try to delete the key again. To use with caution!

 **Clean the registry** will start a registry check for all wrong entries (applications left-over, invalid path, ActiveX etc...). RegSeeker won't delete anything by itself. You have to select the items you want to delete.

- **Green items**: they're safe to be deleted
- **Red items**: you might check before any deletion, they're more sensitive entries.
- If you don't want RegSeeker to list an entry as invalid anymore, just right-click on this entry and select "Add to exclusion list"

 **Cleaning the registry is a sensitive operation.**
Be sure to have the option "Backup before deletion" checked before performing any deletion! You'll be able to restore your deleted keys via the Backup tool.

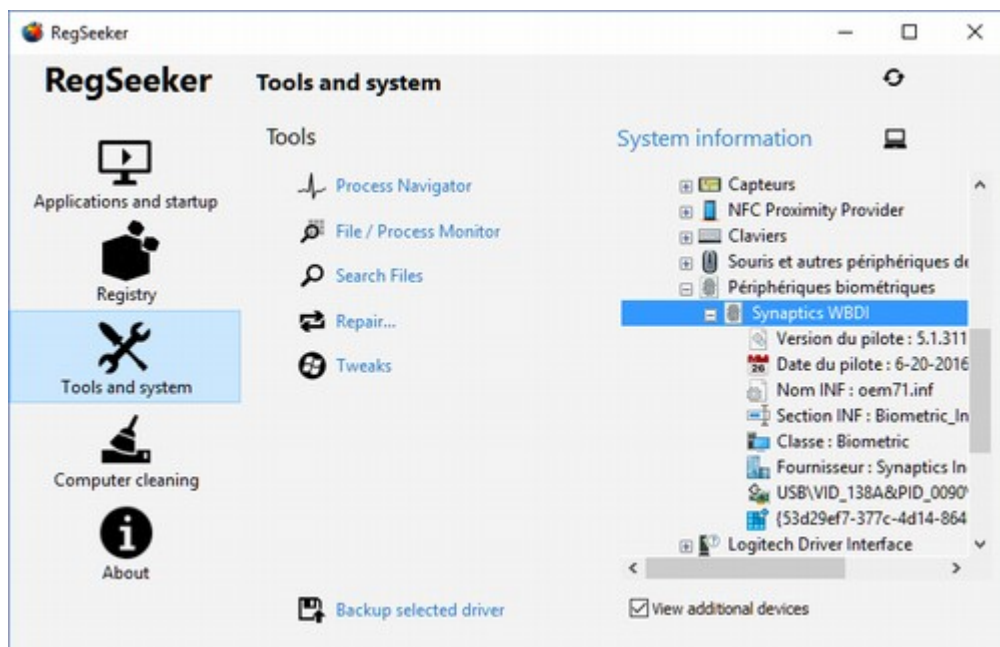
If after cleaning the registry (manual deletion), you run again this tool and the same entries appear, it means that these keys are protected. If you are sure that they must be deleted, you can try taking ownership of them before deletion. After your selection, simply hit the **SHIFT** key and right-click, the option "**Take Ownership !**" will be enable. To use with caution!


 **Backups** panel will display all of your registry backups. Double-click on any item to see the backup content. If you want to restore a backup file, just select it and click on Restore.


- You can delete old backups by selecting them and perform a right-click to choose "Delete selected files"
- Stop: will stop the current backup restoration
- Show protected: will display the restore failure because of protected keys.


★ **Favorites** are useful for creating your own Registry (Regedit) bookmark. You can manually add them via the option "Manage favorites" or on any registry results list (for example using the search function) via a right-click on an entry and choose "Add to favorites"


Tools and system



-  **Process Navigator** panel will display all currently running applications/processes
- Double-click an entry to get a detailed view on the current process.
 - You can see children processes if any : double click on a children/parent process will display the children/parent details.
 - **Advanced version** : you can kill, kill and delete the process (exe file will goes to Recycle Bin), kill and rename (exe file will be renamed to .regseeker)
 - **Advanced version** : you can export the full process list from your Windows start with the timeline.
 - Tasks only: will display only applications visible on your Windows taskbar.

 **RegSeeker command line parameters**
`RegSeeker.exe /p` will start RegSeeker in process navigator mode

 Double-click on RegSeeker status bar will switch between compact and full view!

 **Files/Process Monitor** will display new files and processes creation/deletion on real-time.


- You can choose to display only processes, files or both (right-click).
- You can pause (stop) and restart the monitor.
- **Advanced version**: you can export the full result list with timeline display.

 **RegSeeker command line parameters**


RegSeeker.exe /m will start RegSeeker in files/process monitor mode

RegSeeker.exe /mf will start RegSeeker in files only monitor mode


RegSeeker.exe /mp will start RegSeeker in process only monitor mode

 **Search Files** will search for different files on your hard drive. You can search for several items at once, simply add a ";" between each element, for example: *.tmp ; my*.bak


- Delete to Recycle bin: if you delete some files from the results list, they will go to your Recycle Bin if checked.

 **Repair ... (Advanced version)**: this tool will set some essential registry entries back to their default values: click on Restore default for the selected entry. Useful if you've got some virus/Trojan on your PC. You can manually edit an entry; simply click once on the text field. After your changes, click on "Apply changes".

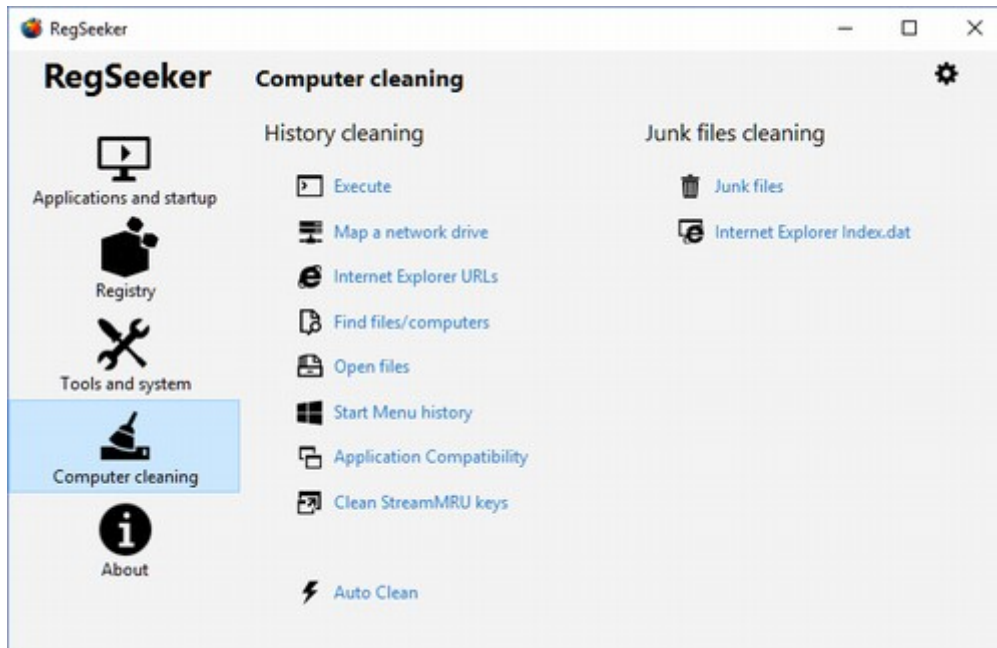
- There is also a command line option, useful for example if your Windows explorer disappeared or if you've started RegSeeker with another account (example: runas admin account), the processes will be started with this account.

 **Tweaks** will permit you to set some Windows configuration tuning! In the list, if for example XP+ is displayed, then it means that this tweak is working for Windows XP and above.

System information details will display all essential hardware configuration on your PC


- Clicking on  will start the Windows Device manager
- Clicking on "**System information**" text will export your configuration
- **Advanced version**: RegSeeker will display as well the hardware registry details. Double-click on it will bring you to the matching Regedit entry.
- View additional devices: RegSeeker will display other OEM hardware equipment (filtering the ones with Microsoft drivers)
- **Advanced version: Backup selected driver**. RegSeeker will create a driver backup into the RegSeeker/Drivers/PC_Name/Device folder including a backup report with files eventually not copied.

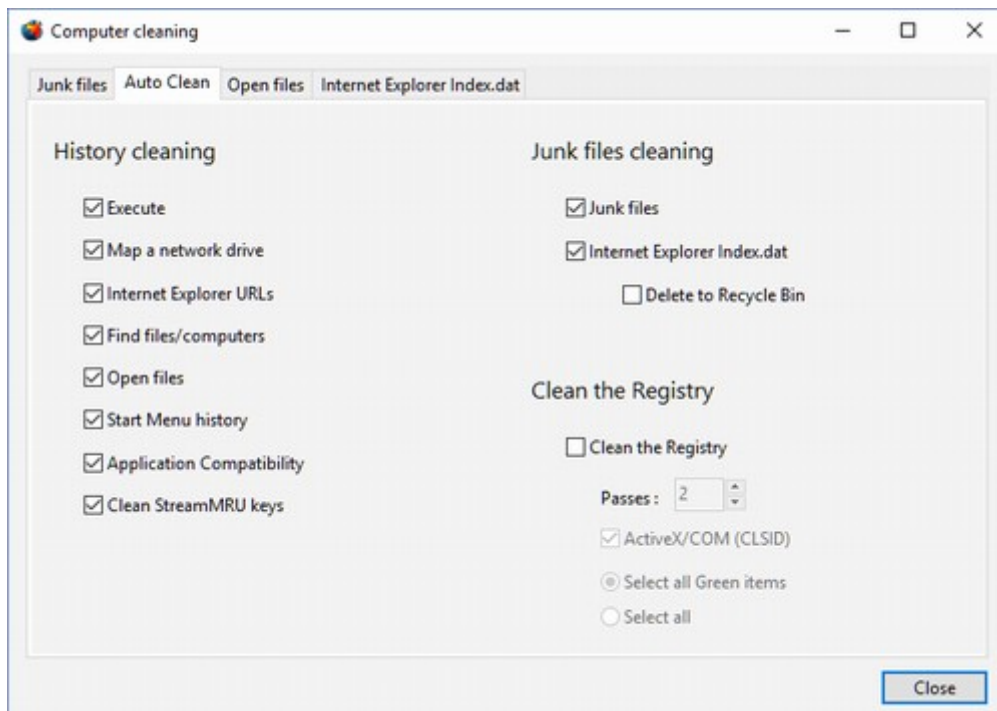
Computer cleaning




RegSeeker can perform several junk files and history (privacy) cleaning on your computer.

They are usually useless files (temporary files, Windows update left-over...) or registry history entries (most recent used files, applications history...)

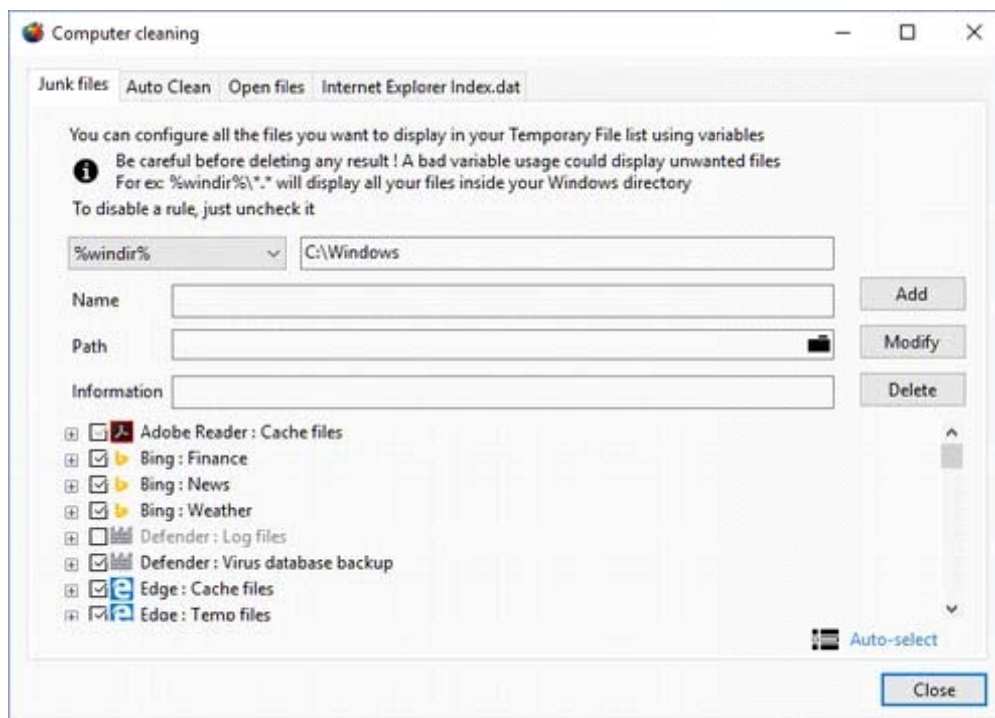
You can manually clean any entry or start an Auto Clean for the items you've selected on the configuration panel (click on the  icon).




 **RegSeeker command line parameters** *(Advanced version only)*
RegSeeker.exe /autoclean RegSeeker will perform the autoclean operation on startup and will exit by itself when done.


Junk files configuration you can add your own entries, all wildcards are available. To be sure that your entries will work on different configuration, it is preferred to use variables (ex: %localappdata%) and not fixed path entries.


- You can add “**-recurse**” option: RegSeeker will scan the root folder you’ve specified as well as its subfolders!
- Example: `%programfiles%*.tmp -recurse` : RegSeeker will search for all .tmp files from the “Program Files” folder and its subfolders.



 If you don't know what to select, you can perform a RegSeeker auto-selection based on your current applications installed on your computer. Just click on “**Auto-select**”

Misc

 You can use the filter box to list only items you want to display. Just type the text you're looking for. The filtering is dynamic which means that results will update on each key stroke.



Enjoy RegSeeker !

If you enjoy RegSeeker and wish to support further development, any donation is welcome!

Please refer to RegSeeker website: <http://www.hoverdesk.net>

Advanced version: for **Home user** or **Corporate Organization licensing**, please fill-up the file <http://www.hoverdesk.net/download/Order.pdf> and send it to licensing@hoverdesk.net

A PayPal invoice will be sent to you. Once payment is accepted, you'll receive a private link to download your version.

Advanced version: for RegSeeker **Media/Press/Website full review**, please contact us from <http://www.hoverdesk.net/contact.php>

RegSeeker is free for personal use only! It can't be sold nor redistributed without author's agreement.